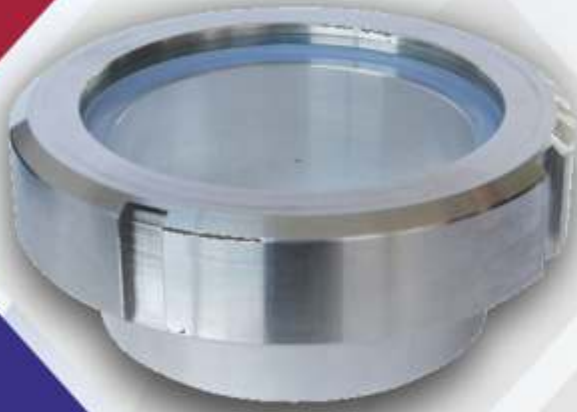




MANUFACTURING | AUTOMATION | CALIBRATION

+91 9082554415 / 9022709337

info@preciseequipments.com



- ✓ Double Window Sight Glass
- ✓ Full View Sight Glass
- ✓ Circular Pad Type Sight Glass
- ✓ Rectangular Pad Type Sight Glass
- ✓ Sight Glass With Wiper
- ✓ Sms Union Sight Glass

HIGH QUALITY SIGHT GLASS FOR YOUR  
WORLD CLASS EQUIPMENT

[www.preciseequipments.com](http://www.preciseequipments.com)



## SMS UNION PAD TYPE SIGHT GLASS

**• Application:**

Weld-on sight glass fitting with screwed cover flange. Sightport for viewing into Bioreactors, Laboratory mixers, filters as well as into process vessels, separators, pipelines and other usually closed containers.

Particularly suitable for pharmaceuticals, food and beverage processing, e. g. breweries, dairies etc.

**• Operating Conditions:**

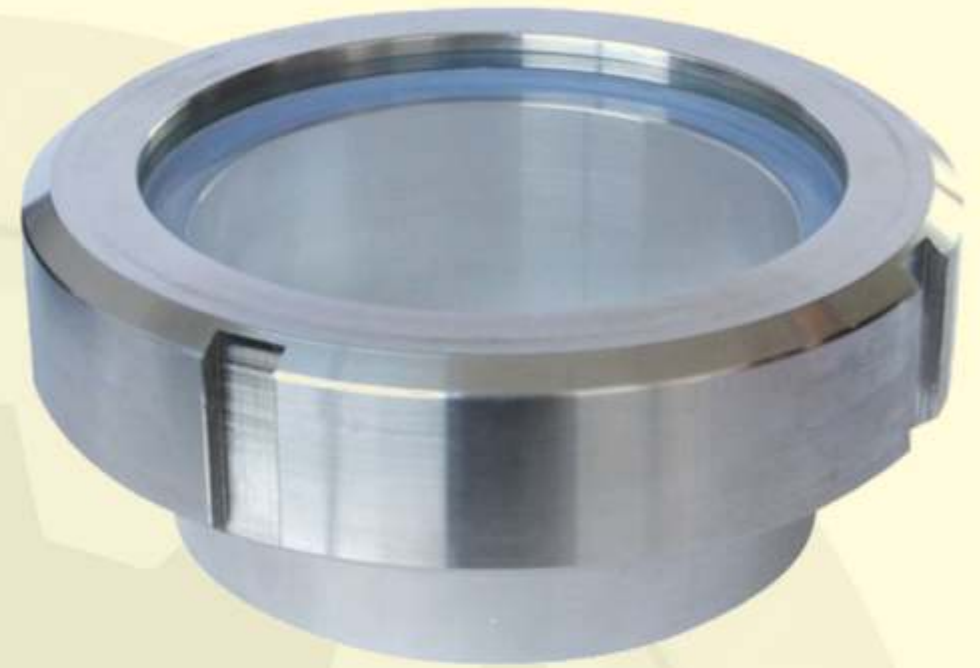
Pressure: 6 bar (higher pressure ratings on request), vacuum

**• Temperatures:** Fitting: max. 280°C, with flat sealing face and flat

gasket and with requisite profile seal (4) – see temperature diagram.

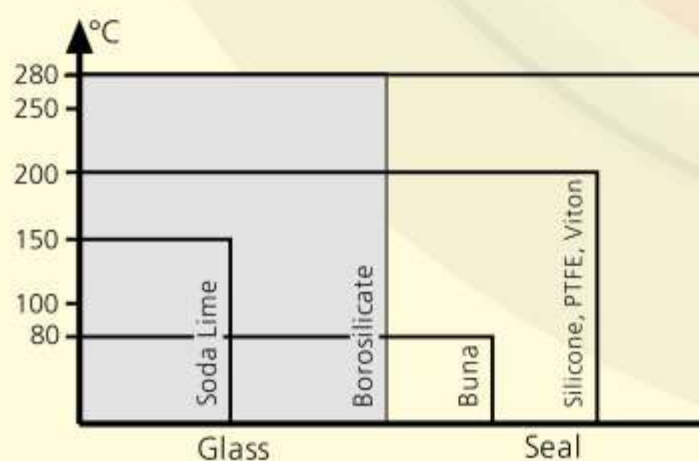
**• Parts and materials,** shown in adjoining exploded view, are

Items	Parts	Material options
1	slotted cover nut	SS304/SS316/MS
2	flat gasket	PTFE/VITON/NEOPRENE/SILICON
3	sight glass disc	- soda lime glass: toughened (tempered), material acc. to DIN 8902, for max. temp. 150°C - borosilicate glass: toughened (tempered), material acc. to DIN 7080, for max. temp. 280°C
4	O-ring seal	Viton, PTFE, Silicone, EPDM
5	weld neck nozzle	SS304/SS316/MS



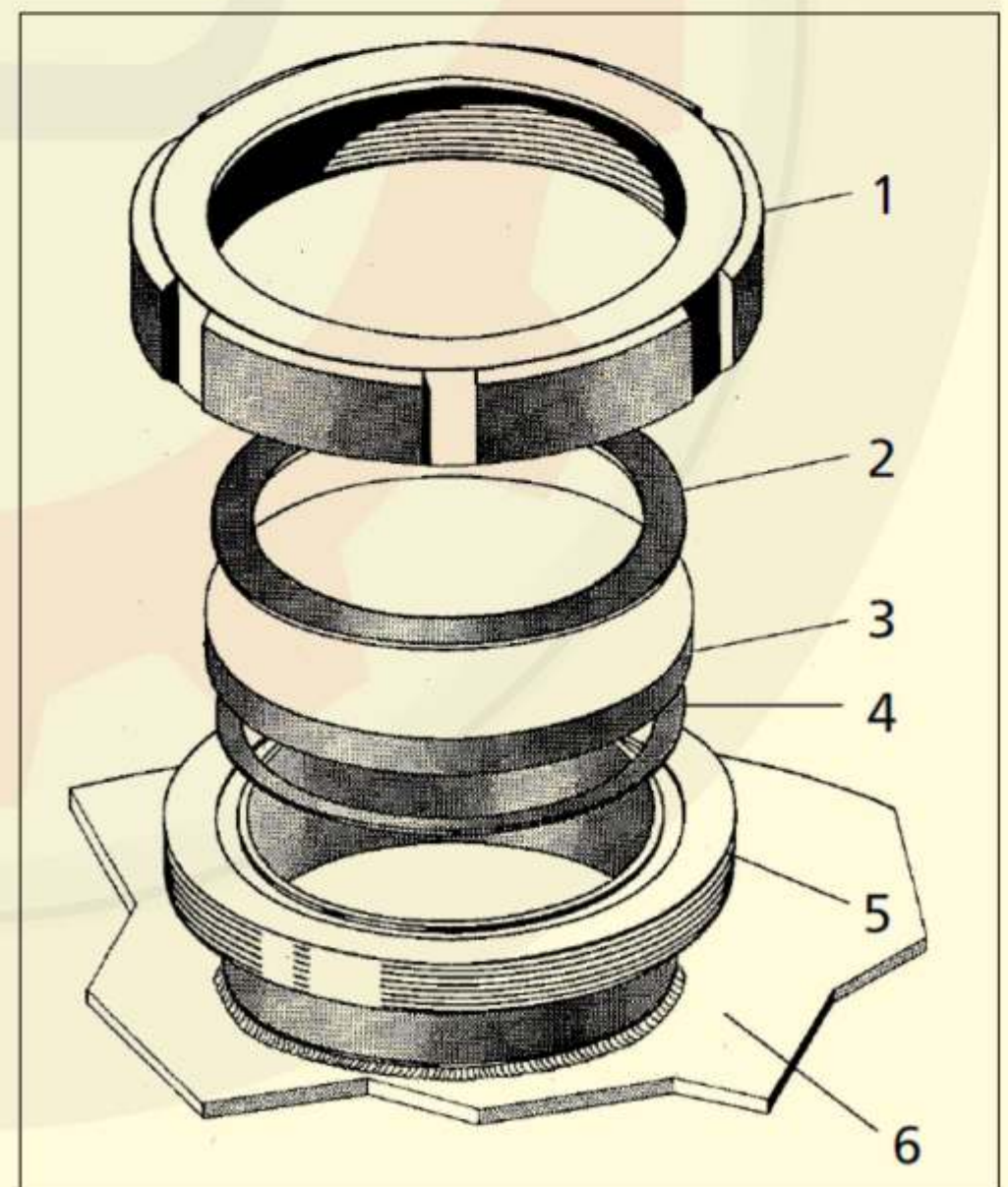
SMS UNION PAD TYPE SIGHT GLASS

**• Temperature diagram serves for choice of material option:**



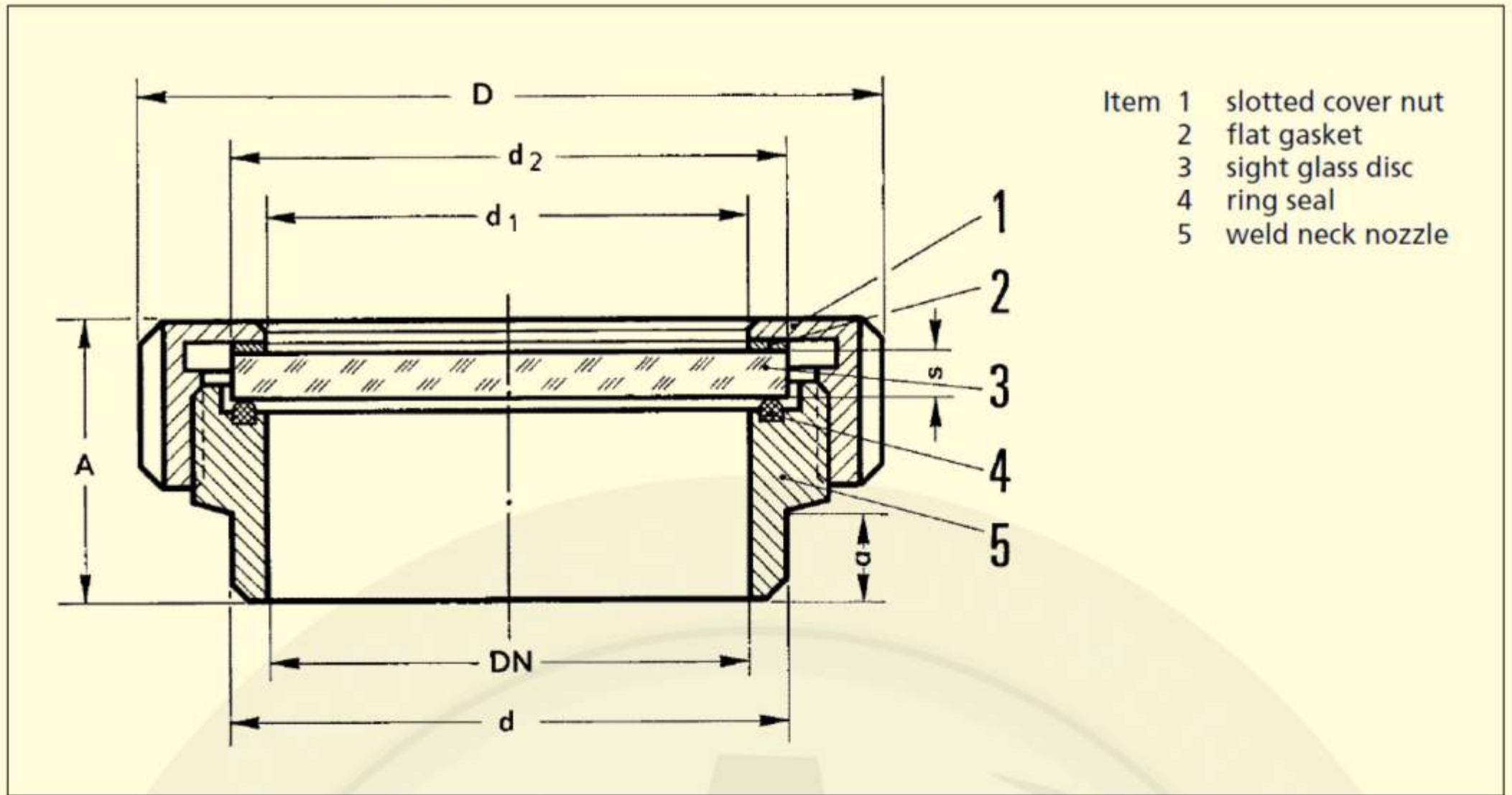
**• Assembly:**

After welding nozzle (5) into the vessel wall (6), O-ring seal (4), glass discs (3) and flat gasket (2) are assembled in the sequence shown and tightened down by the slotted cover nut (1) against nozzle (6).



Exploded view of SMS UNION PAD TYPE SIGHT GLASS

• Dimensions Of Sms Union Pad Type Sight Glass



All dimensions in mm

Size		1	2	3	4	5	6
Nominal bore	DN	50	65	80	100	125	150
Viewing diameter	$d_1$	50	66	81	100	125	150
Sight glass disc	$d_2$	63	80	94	113	141	166
	$s$	10	12	12	15	15	15
Fitting	$D$	92	112	127	148	178	210
	$d$	61	79	93	114	136	163
	$A$	44	52	57	69	59	62
	$a$	21	24	25	34	22	22