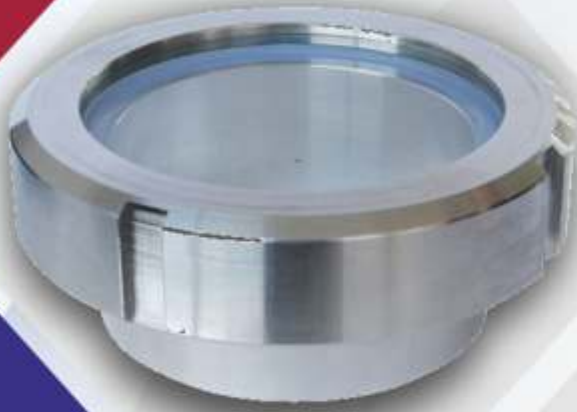




MANUFACTURING | AUTOMATION | CALIBRATION

+91 9082554415 / 9022709337

info@preciseequipments.com



- ✓ Double Window Sight Glass
- ✓ Full View Sight Glass
- ✓ Circular Pad Type Sight Glass
- ✓ Rectangular Pad Type Sight Glass
- ✓ Sight Glass With Wiper
- ✓ Sms Union Sight Glass

HIGH QUALITY SIGHT GLASS FOR YOUR
WORLD CLASS EQUIPMENT

www.preciseequipments.com



SIGHT-GLASS-WIPER

• Application:

For manual cleaning, when required, of inside glass surface in sightports.

• Operating conditions:

Vacuum tight; pressure tight to at least 2 bar and, depending on glass diameter, to 6 bar. Max. permissible temperature 220°C (though this depends on glass type used).



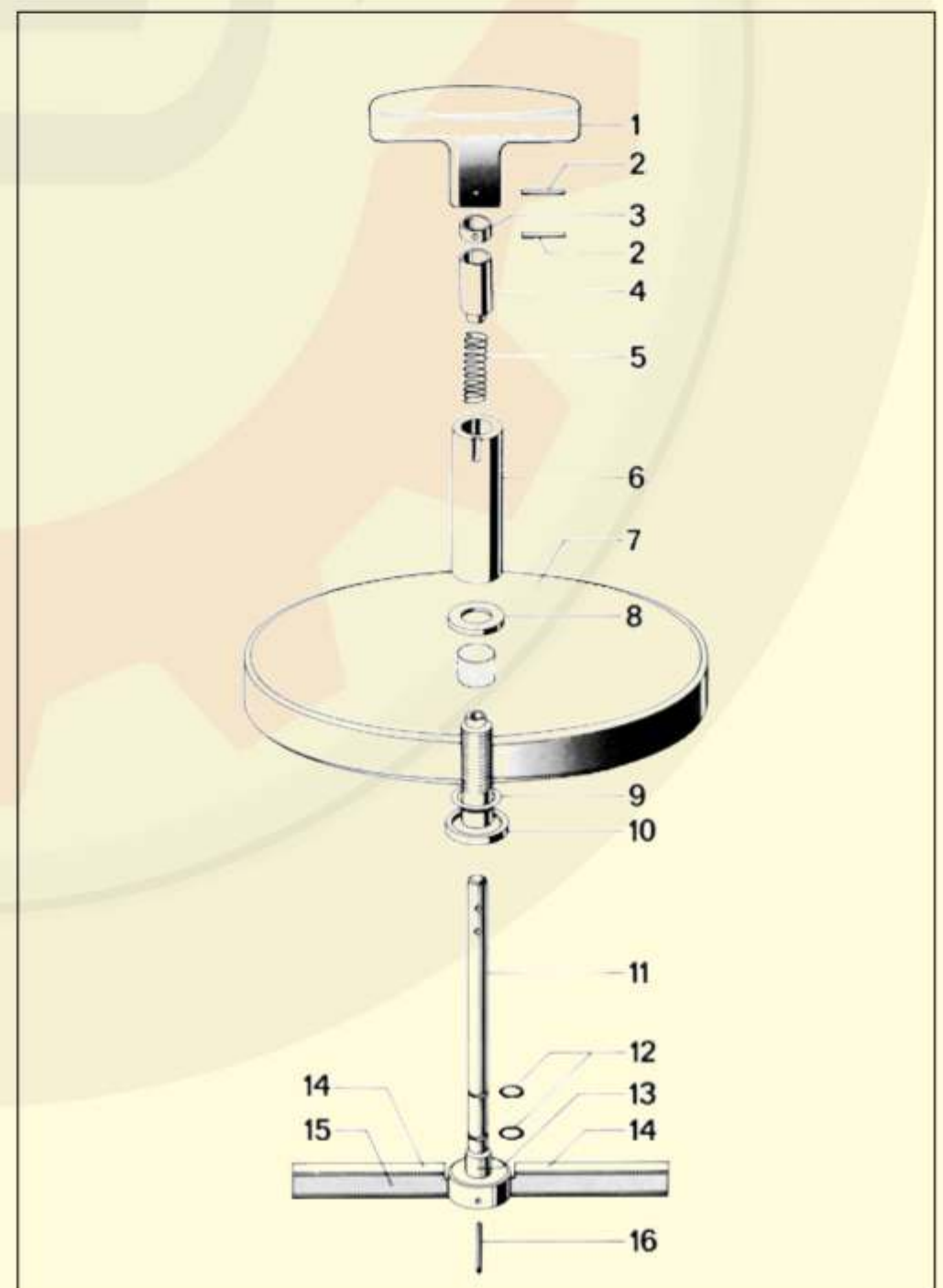
sight glass wiper

• Assembly and material alternatives for the complete supply:

Item	Part
1	T grip - Polycarbonate (bush brass)
2	locating pins
3	spacer collar
4	spacer collar
5	compression spring
6	bush - threaded female
7	glass disc - Sodalime or Borosilicate
8	gasket - non asbest fibre
9	O-ring seal - Viton
10	bush - threaded female
11	wiper spindle
12	O-ring seals - Viton
13	bearing sleeve - PTFE
14	wiper blade - silicon, PTFE or EPDM
15	wiper arm
16	locating pin

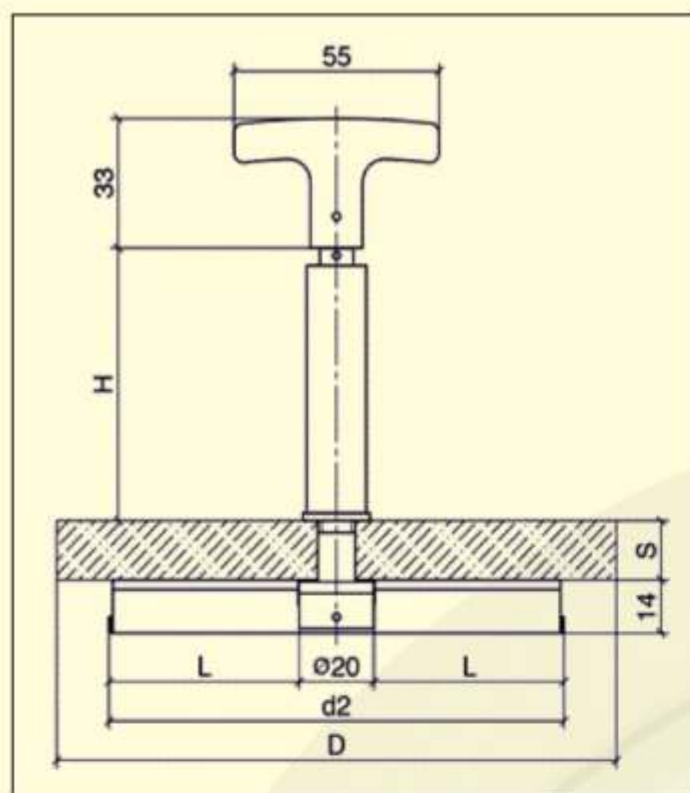
• Fitting and assembly instructions:

If the wiper is ordered separately, i. e. not installed into sight glass disc by the manufacturer, the assembly has to be done with regard to separate installation an operating instructions, attached to the delivery.



Exploded view of components

• Dimensions for sight glass wiper



All dimensions in mm

size		3	4	5*	6*	7*	8*	special sizes			
								9	10	11	12
nominal diameter	DN	50	80	100	125	150	200	250	300	350	400
viewing diameter	d_1	80	100	125	150	175	225	on request			
dimension für H	mm	70/70	70/70	70/65	70/65	70/65	70/60				
soda lime or borosilicate sight glass disc	D	100	125	150	175	200	250				
	s	15/15 ¹	15/15 ¹	15/19 ¹	15/19 ¹	15/19 ¹	15/25 ¹				
	PN max...bar	6/6 ¹	6/6 ¹	5/6 ¹	4/6 ¹	4/4 ¹	2/4 ¹	depending on glass diameter as well as inside diameter of assembly, max. 460 mm			
wiper blade	d_2	77	97	122	147	172	222				
part no. 7223__00 (replace with the respective figures, e.g. .065.)		062.	.063.	.064.	.065.	.066.	.067.				