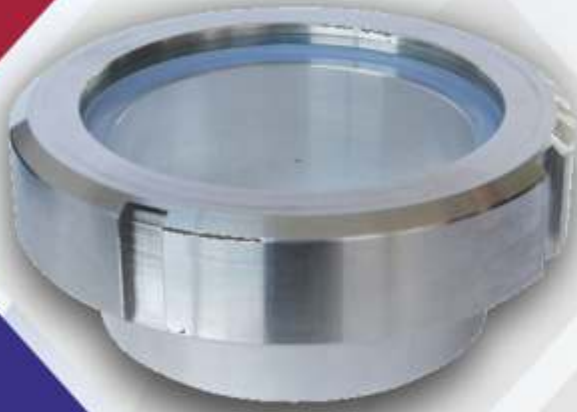




MANUFACTURING | AUTOMATION | CALIBRATION

+91 9082554415 / 9022709337

info@preciseequipments.com



- ✓ Double Window Sight Glass
- ✓ Full View Sight Glass
- ✓ Circular Pad Type Sight Glass
- ✓ Rectangular Pad Type Sight Glass
- ✓ Sight Glass With Wiper
- ✓ Sms Union Sight Glass

HIGH QUALITY SIGHT GLASS FOR YOUR
WORLD CLASS EQUIPMENT

www.preciseequipments.com



FULL VIEW SIGHT GLASS

• Application:

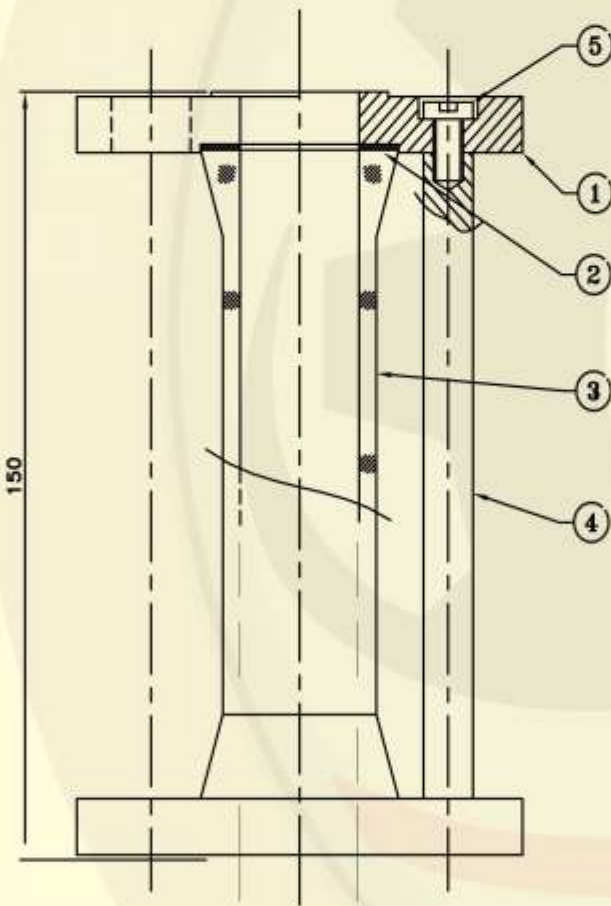
A Sight Flow Indicator is a device which is inserted in a run of pipe to observe the flow of fluid in the pipe. This type of Sight Glass gives 360° Visibility of fluid flowing in pipe

• Suitable for

- Design Temperature: Up to 150°C
- Design Pressure: For 1/2" & 3/4" up to 7kg/cm²
For 1" & above up to 4kg/cm²
- Line size: Up to 400 NB
- Material of wetted parts: MS/CS/SS304/SS304L/SS316/SS316L and PP/HDPE/PVDF/PFA/PTFE Lined
- Connection: Flanged to ASA/BS/DIN/JIS/Screwed BSP/NPT/Butt weld



FULL VIEW SIGHT GLASS



Features

Design STD	As per B5 5351
Face to Face	4" & 6" (depend on request)
Testing	As per BS 5146, ISO 5208
Size	15 mm to 150 mm

Material Specification

Body	MS/SS304/SS304L/SS316/SS316L
Glass	Borosilicate Glass
Gasket	PTFE, SILICON
Stud 7 Nut	SS 202/SS 304 / SS 316

Dimension Details (All dimension in mm)

Size (NB)	15	20	25	40	50	65	80	100	150
Glass Size	18x28x128	21x33x128	27x41x128	40x56x128	52x69x128	65x83x128	79x98x128	108x132x128	159x184x120
Total Length	150 mm	150 mm	150 mm	150 mm	150 mm	150 mm	150 mm	150 mm	150 mm
Thickness	12 mm	12 mm	12 mm	12 mm	12 mm	12 mm	12 mm	12 mm	16 mm
Race face	35 mm	43 mm	51 mm	73 mm	92 mm	105 mm	127 mm	157 mm	216 mm
PCD	60.5 mm	70 mm	79.5 mm	98.5 mm	120.5 mm	139.7 mm	152.5 mm	190.5 mm	241.3 mm
OD	89 mm	98.5 mm	108mm	127 mm	152.5 mm	177.8 mm	191 mm	229 mm	279.4 mm