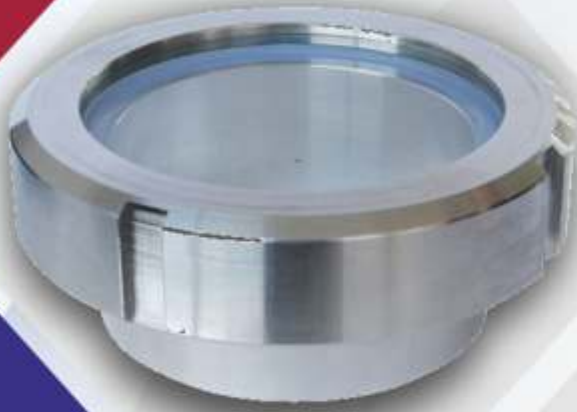




MANUFACTURING | AUTOMATION | CALIBRATION

+91 9082554415 / 9022709337

info@preciseequipments.com



- ✓ Double Window Sight Glass
- ✓ Full View Sight Glass
- ✓ Circular Pad Type Sight Glass
- ✓ Rectangular Pad Type Sight Glass
- ✓ Sight Glass With Wiper
- ✓ Sms Union Sight Glass

HIGH QUALITY SIGHT GLASS FOR YOUR
WORLD CLASS EQUIPMENT

www.preciseequipments.com



CIRCULAR PAD TYPE SIGHT GLASS

Application:

Weld-on low pressure sightglass fittings for observing the internals of tanks, pressure vessels, silos, gear-trains, separators and pipelines etc.

General:

Precise equipment low pressure sightglasses suitable for welding into or onto vessel walls. The reduced dimensions provide a cost effective alternative for low pressure applications. Available in sizes from 50mm to 300mm viewing diameters.

Operating Conditions:

Rated for pressures up to 5 bar depending on size. Temperature rating up to 900°C depending on seal and glass selection.

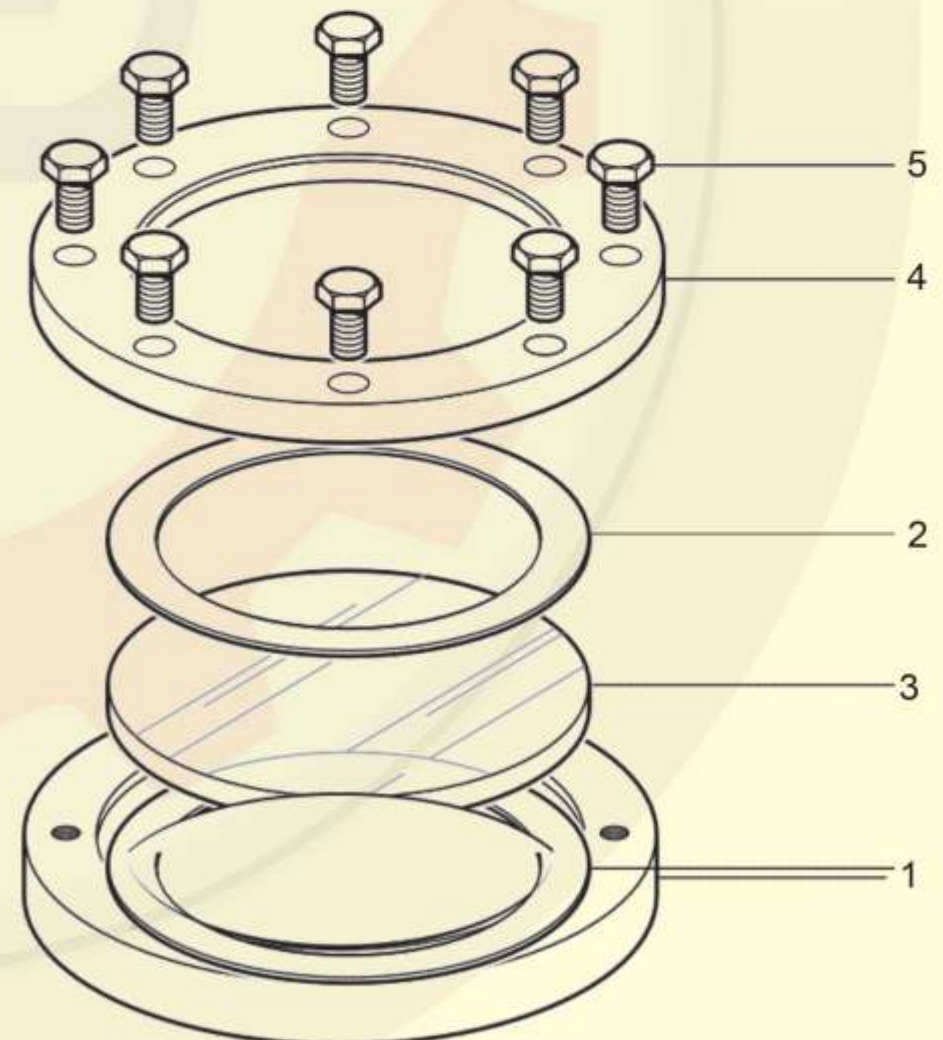
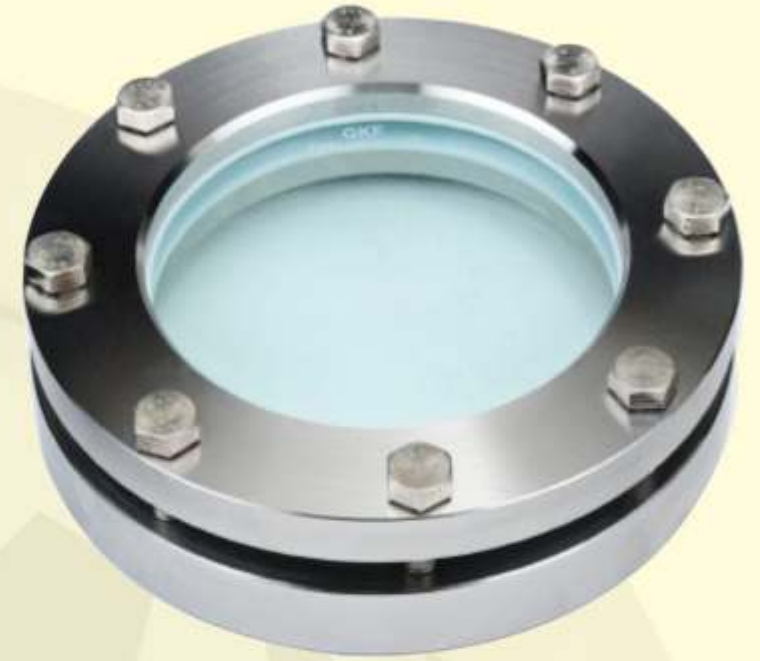
Combinations:

Sightglass units can be combined with a range of light fittings for use in hazardous or safe areas. Also available with wiper unit.

Material of components:

(referred to in adjoining exploded view)

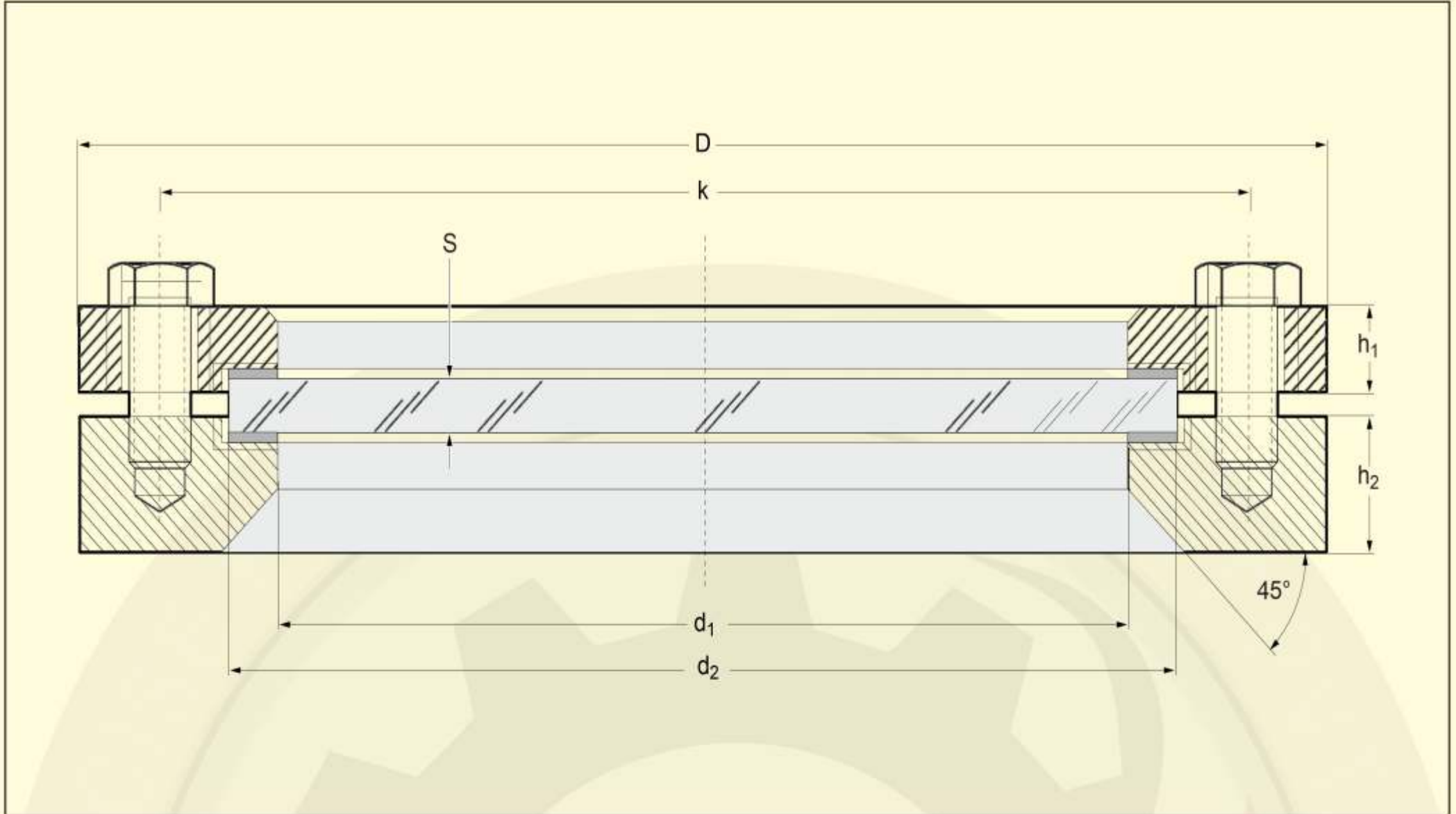
Item	Part	Material options
1	Base Flange: (welding flange)	Stainless steel 316L or 304L, carbon steel.
2	Gaskets	NAF, PTFE, Viton, food quality Silicone rubber or micaceous material for high temperature applications.
3	Sight glass disc	Toughened Soda Lime (up to 150°C) to DIN8902 or BS3463, toughened Borosilicate (up to 280°C) to DIN7080 or Quartz (up to 900°C).
4	Cover flange	Stainless steel 316L or 304L carbon steel.
5	Securing bolts	Stainless steel A2 grade or carbon steel.



Exploded view of circular sightglass unit.

Other materials are available upon request.

Dimensions for Precise equipment Standard Sightglass Fitting



TBS -Toughened Borosilicate/ TSL-Toughened Sodalime

Size		1	2	3	4	5	6	7	8	9	10
Pressure rating	bar	5	5	5	5	5	5	4	4	3	3
Viewing diameter	d1	50	80	100	125	150	175	200	225	250	300
Sight glass disc	d2	60	89	114	150	175	200	225	250	275	325
	S (TSL)	10	12	12	15	15	15	15	19	19	19
	S (TBS)	10	12	12	20	20	25	25	20	20	30
Flanges	D	100	150	177	202	228	254	280	304	345	405
	h1	16	16	16	16	16	16	16	19	19	19
	h2	25	25	25	25	25	25	25	30	30	30
Bolts	K	78	127	152	178	204	229	256	280	304	366
	No.	4	4	4	8	8	8	8	8	8	8
	Size	M12	M12	M12	M12	M12	M12	M12	M12	M12	M12
	Length	30	30	30	35	35/45	35/45	35/45	40/45	40/45	45/55

Dimensions for Precise Equipment Standard Sightglass Fitting with Wiper Assembly

Size		1	2	3	4	5	6	7	8	9	10
Pressure rating	bar	N/A	5	5	5	5	5	3	3	2	2
Viewing Diameter	d1	50	80	100	125	150	175	200	225	250	300
Sight glass disc	d2	N/A	89	114	150	175	200	225	250	275	325
	S (TSL)	N/A	12	12	15	15	15	15	15	15	15
	S (TBS)	N/A	12	12	15	20	20	15	15	20	15