



MANUFACTURING | AUTOMATION | CALIBRATION

+91 9082554415 / 9022709337

info@preciseequipments.com



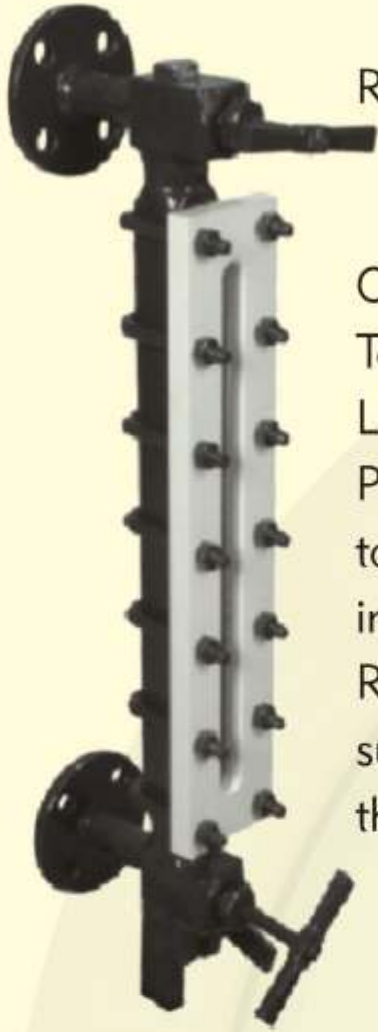
- ✓ *Tubular Level Indicator*
- ✓ *Reflex Level Indicator*
- ✓ *Topmounted Magnetic Level Indicator*
- ✓ *Side Mounted Magnetic Level Indicator*
- ✓ *Float & Board Level Indicator*

HIGH QUALITY LEVEL INDICATOR FOR YOUR
WORLD CLASS EQUIPMENT

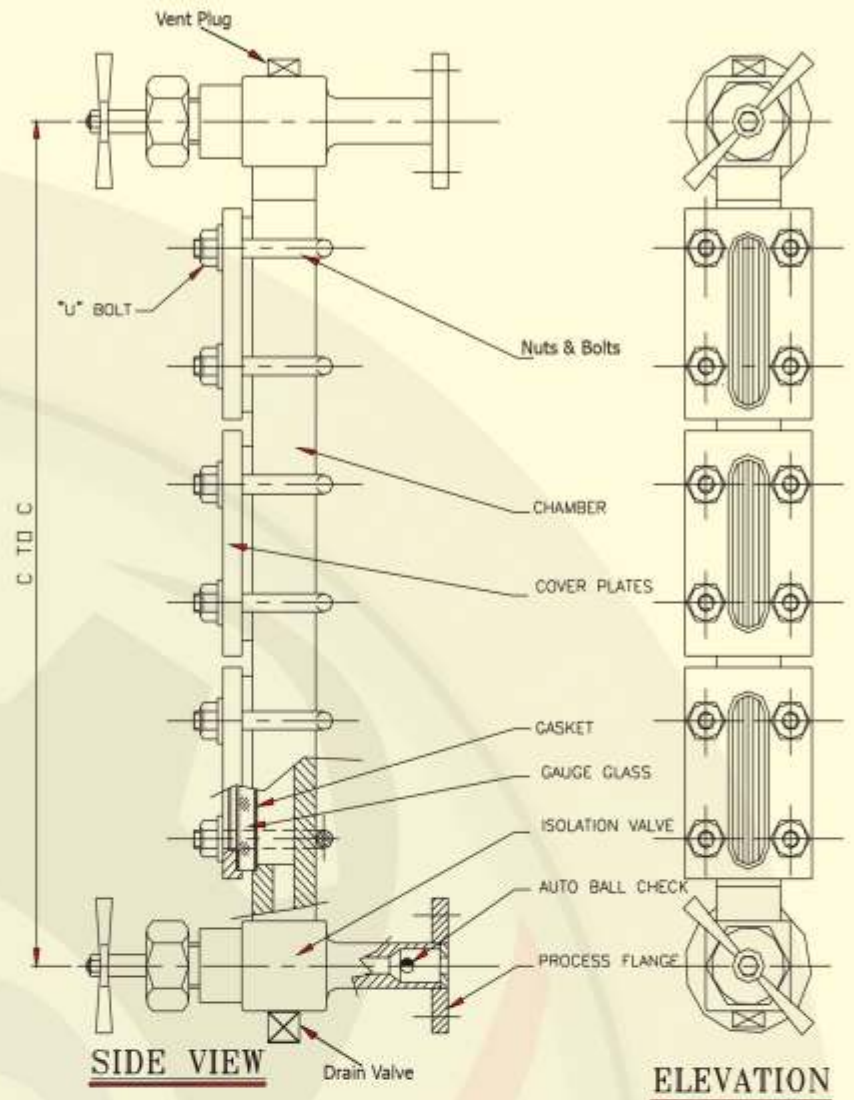
www.preciseequipments.com



REFLEX LEVEL INDICATOR



Reflex Gauges are Designed specially to meet the most critical requirements of Petrochemical, Fertilizer, Pharmaceutical & Chemical Industries Involving Inflammable Toxic, High Pressure, High Temperature Liquids. Inner surface of glass has Reflecting Prisms. Liquid Levels shows black in contrast to mirror like surface above. As the liquid fills in the tank, the liquid level can be seen in the Reflex Type Level Gauge. Since the inner surface of the glass has Reflecting Prisms, the Liquid Levels shows black in contrast to mirror like surface above.



Suitable for :

- Application : Liquids
- Liquid Chamber (Wetted Part) : MS/CS/ASTM A105/SS304/SS316
- Cover Plate (Non Wetted Part) : MS/CS/ASTM A105/SS304/SS316
- Design Temperature : Up to 230°C
- Design Pressure : Up to 40 Kg/cm²
- C/C Distance : Up to 6000 mm
- Connection : Flanged to ASA/BS/DIN/ Socket Weld/Butt Weld

SPECIFICATION :

Item	Reflex Level Indicator
Glass Type	Toughened Borosilicate Glass / Mexos / Klinger
Nuts & Bolts	Carbon Steel / ASTM A194 & 193/SS
Gasket	CAF / Metallic Graphite
Isolation Valve	In Built Straight / Off Set
Vent & Drain	Plug / Valve
Mounting	Side / R.H.S / L.H.S
Connection	Flanged / Screwed
Valve Body/trim	MS / CS / A 105 / SS 304 / SS 304L / SS 316 / SS 316L / PP
Body / Cover Plate	MS/ CS / A 105 / SS 304 / SS 304L / SS 316 / SS 316L/ PP

Example

